

# AGENDA

**Meeting:** MALMESBURY AREA BOARD

**Place:** Ashton Keynes Village Hall, Park Place, Ashton Keynes, Swindon,  
Wiltshire, SN6 6NT

**Date:** Wednesday 16 March 2011

**Time:** 7.00 pm

---

Including the Parishes of Ashton Keynes, Brinkworth, Brokenborough, Charlton, Crudwell, Dauntsey, Easton Grey, Great Somerford, Hankerton, Lea & Cleverton, Leigh, Little Somerford, Luckington, Malmesbury, Minety, Norton & Foxley, Oaksey, Sherston, Sopworth and St Paul Malmesbury Without

---

**The Area Board welcomes and invites contributions from members of the public. The Chairman will try to ensure that everyone who wishes to speak will have the opportunity to do so.**

If you have any requirements that would make your attendance at the meeting easier, please contact your Democratic Services Officer.

**Refreshments and networking opportunities will be available from 6.30 pm.**

---

Please direct any enquiries on this agenda to Alexa Smith (Democratic Services Officer), on 01249 706610 or [alexa.smith@wiltshire.gov.uk](mailto:alexa.smith@wiltshire.gov.uk)

or Miranda Gilmour (Malmesbury Community Area Manager), on 01672 515742 or [miranda.gilmour@wiltshire.gov.uk](mailto:miranda.gilmour@wiltshire.gov.uk)

All the papers connected with this meeting are available on the Council's website at [www.wiltshire.gov.uk](http://www.wiltshire.gov.uk)

Press enquiries to Communications, on 01225 713114 / 713115.

---

## Wiltshire Councillors

Cllr John Thomson, Sherston (Chairman)  
Cllr Simon Killane, Malmesbury (Vice  
Chairman)

Cllr Carole Soden, Minety  
Cllr Toby Sturgis, Brinkworth

## Items to be considered

## Time

1. **Chairman's Welcome and Introductions** (*Pages 1 - 2*)

The Chairman will welcome those present to the meeting.

2. **Apologies for Absence**

3. **Minutes** (*Pages 3 - 14*)

To approve and sign as a correct record the minutes of the meeting held on 19 January 2011.

4. **Declarations of Interest**

Councillors are requested to declare any personal or prejudicial interests or dispensations granted by the Standards Committee.

5. **Chairman's Announcements** (*Pages 15 - 16*)

The Chairman will provide an announcement regarding the 2011 census, as in the agenda pack.

6. **Partner Updates** (*Pages 17 - 24*)

To receive updates from the following partners:

- a) Wiltshire Police
- b) Wiltshire Fire and Rescue Service (attached)
- c) NHS Wiltshire (attached)
- d) Malmesbury and the Villages Community Area Partnership (attached)
- e) Town and Parish Councils.

7. **Community Services Contract**

Information will be provided about the Great Western Hospital contract to run the community services currently run by the PCT (health clinics, community hospitals, maternity services and neighbourhood teams). This will be followed by an opportunity to ask questions.

8. **Community Issues Update** (*Pages 25 - 32*)

The Community Area Manager will provide a summary of current community issues and the Area Board will agree those to be closed.

9. **Speed Bumps Survey Update** (*Pages 33 - 34*)

Martin Rose, Principal Highways Engineer, will respond to the speed bumps survey results and Town Council recommendations.

10. **Cabinet Representative**

Councillor John Thomson will provide a short overview of his role as Deputy Leader and Cabinet member for Adult Care, Communities and Libraries. There will then be the opportunity to ask Councillor Thomson questions.

11. **End of Life Care**

Information will be provided regarding the end of life care strategy that Wiltshire Council and NHS Wiltshire have adopted.

12. **Outside Body Appointments Update**

Councillors will provide an update on the outside bodies to which they are appointed.

13. **Community Area Grants Scheme** (*Pages 35 - 40*)

Councillors will be asked to consider the Community Area Grants report and make recommendations on the applications received, as follows:

- a) Minety Village Hall – seeking £1,504 towards refurbishment of toilets
- b) Glovers Court Amenity Group – seeking £178 towards the purchase of blackout blinds
- c) Malmesbury River Valleys Trust – seeking £120 towards the cost of providing educational materials.

14. **Performance Reward Grant Scheme**

Malmesbury Area Board is pleased to announce that the application made to the Performance Reward Grant Scheme from the Malmesbury Boxing Club has been successful and the club received £20,000. The Eilmer Bridge application was unfortunately unsuccessful.

An expression of interest had been received by all 18 Area Boards on behalf of Wiltshire's Neighbourhood Watch Schemes seeking funds for the purchase of UV scanning torches for issue to Police officers on operational duties.

15. **Public Consultations** (*Pages 41 - 42*)

The Chairman will provide information about the outcome of the leisure facilities review and the current child poverty consultation, as in the agenda pack.

16. **Evaluation and Close** (*Pages 43 - 44*)

**Future Meeting Dates**

Wednesday, 4 May 2011

7.00 pm

Sherston Village Hall

Wednesday, 29 June 2011

7.00 pm

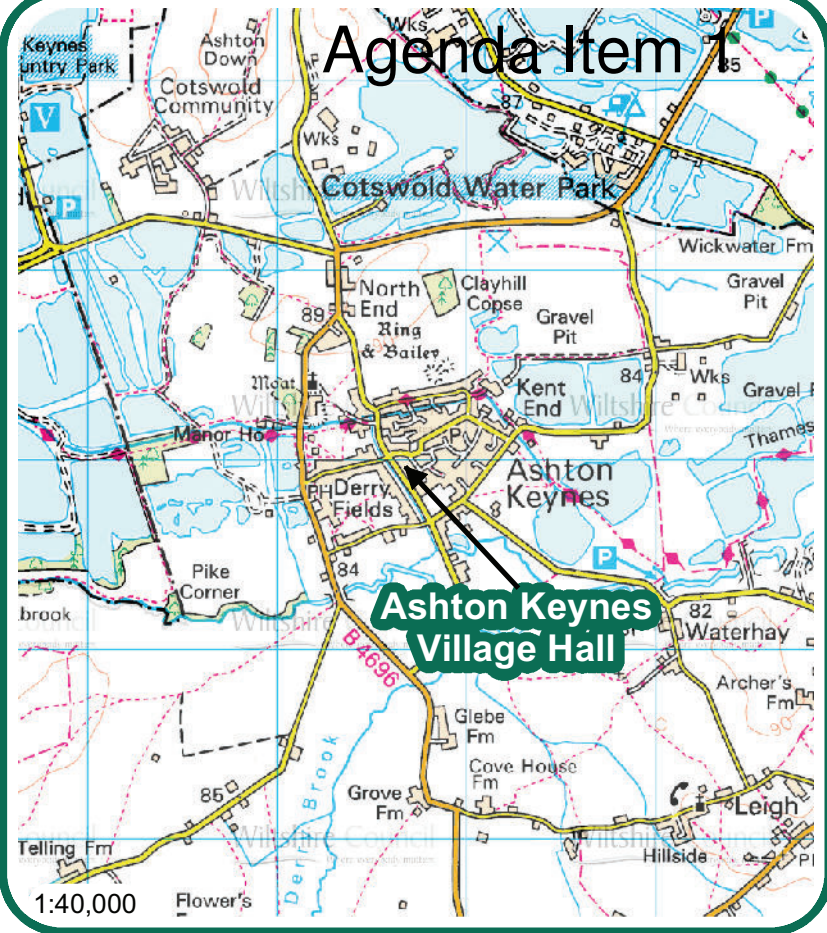
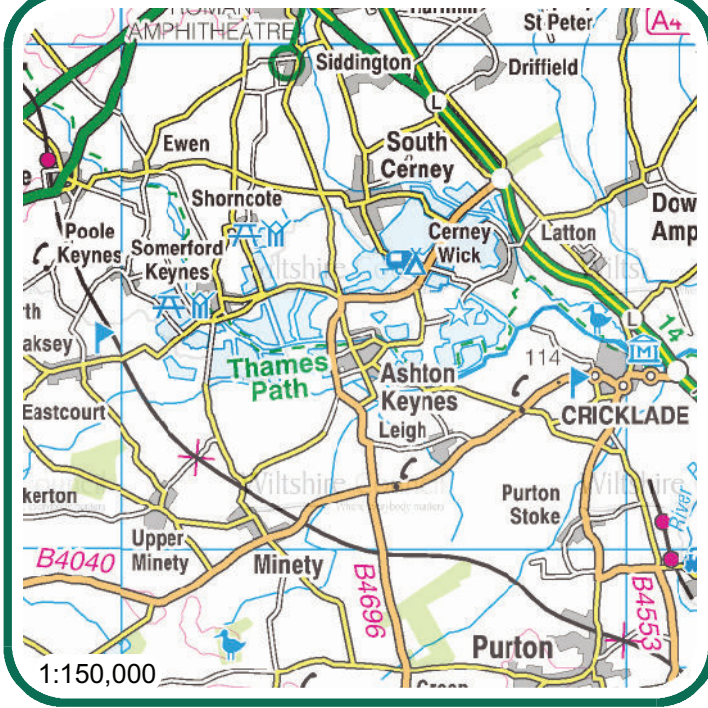
Ashton Keynes Village Hall

Wednesday, 7 September

7.00 pm

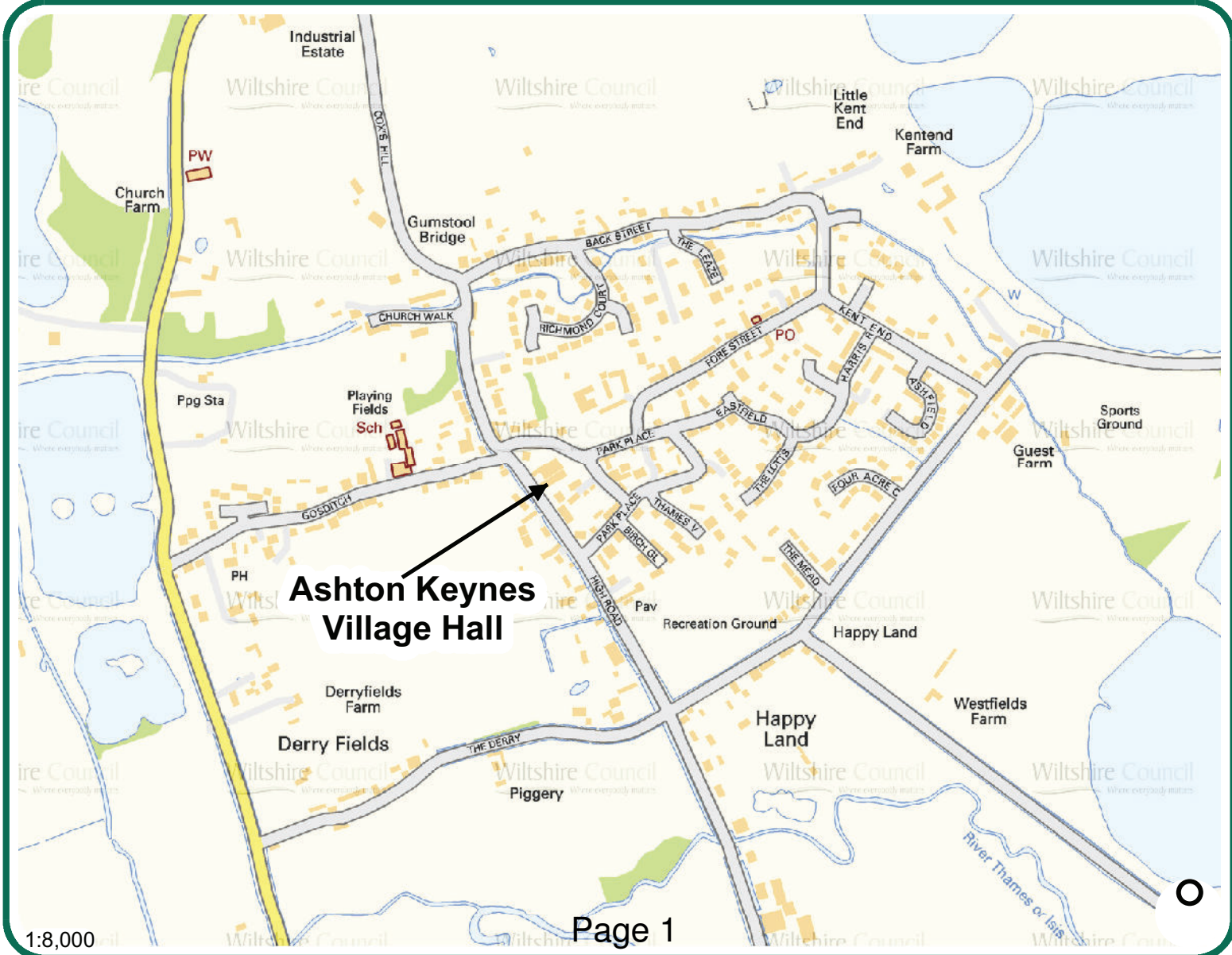
Malmesbury School





**Ashton Keynes Village Hall**  
 Park Place  
 Ashton Keynes  
 Swindon  
 Wiltshire  
 SN6 6NT

**Wiltshire Council**  
 Where everybody matters



This page is intentionally left blank

# MINUTES

**Meeting:** MALMESBURY AREA BOARD  
**Place:** Malmesbury Town Hall, Cross Hayes, Malmesbury, Wilts SN16 9BZ  
**Date:** 19 January 2011  
**Start Time:** 7.00 pm  
**Finish Time:** 9.00 pm

---

Please direct any enquiries on these minutes to:

Alexa Smith (Democratic Services Officer), on 01249 706610 or [alexa.smith@wiltshire.gov.uk](mailto:alexa.smith@wiltshire.gov.uk).

Papers available on the Council's website at [www.wiltshire.gov.uk](http://www.wiltshire.gov.uk)

---

## **In Attendance:**

### **Wiltshire Councillors**

Cllr John Thomson (Chairman), Cllr Simon Killane (Vice Chairman), Cllr Carole Soden and Cllr Toby Sturgis

### **Wiltshire Council Officers**

Alexa Smith

Miranda Gilmour, Community Area Manager

Jacqui White (Service Director, Shared Services and Customer Care)

### **Town and Parish Councillors**

Brinkworth – Rob Bailey, John Beresford\* and Owen Gibbs

Crudwell – Terry Fraser\* and Ian McKay\*

Hankerton – Terry Mockler\*

Lea and Cleverton - John Cull\*

Little Somerford – Tony Pooley\* and D Sharp

Luckington and Alderton – George Lynham\*

Minety – Peter Crocker\*

Norton and Foxley – Peter Campaigne\*

Sherston – Martin Rea\*

St Paul Malmesbury Without – Roger Lee\*

\* = Denotes nominated representative

**Partners**

Wiltshire Police - Sergeant Martin Alvis and Inspector Chris Martin

Wiltshire Police Authority – Sean Cooper

Malmesbury and the Villages Community Area Partnership – Mark Allen, Peter Gilchriest, Sid Jevons and Robin Rogers

Gazette and Herald - Joe Ware

Glovers Court Residents – Anne Haggerty

Malmesbury.com – Justin and Ruth Jeffrey

Malmesbury and St Paul Without Residents Association – Roger Budgen

Malmesbury River Valleys Trust – Frances Goldstone

Wiltshire and Gloucestershire Standard - Tina Robins

**Members of public in attendance: 28**

**Total in attendance: 63**

---



<u>Agenda Item No.</u>	<u>Summary of Issues Discussed and Decision</u>	<u>Action By</u>
1.	<p><u>Chairman's Welcome and Introductions</u></p> <p>The Chairman welcomed those present to the meeting and introduced Inspector Chris Martin, the new Inspector for Wootton Bassett Police Station, and Sean Cooper, Solicitor for the Wiltshire Police Authority. The Chairman thanked the waste collection and highways and gritting teams for doing a good job over the Christmas and New Year period. The Chairman said thank you for the Fairtrade promotion stand which was available to view before the meeting.</p>	
2.	<p><u>Apologies for Absence</u></p> <p>Apologies for absence were received from Katherine Doody (Malmesbury Town Council), John Parmiter (Lea and Cleverton Parish Council), Graham Thorne (Minety Parish Council), Mark Wilkins (Charlton Parish Council) and James York Moore.</p>	
3.	<p><u>Minutes</u></p> <p>The minutes of the meeting held on 10 November 2010 were approved and signed as a correct record.</p>	
4.	<p><u>Declarations of Interest</u></p> <p>There were no declarations of interest.</p>	
5.	<p><u>Chairman's Announcements</u></p> <p>The Chairman drew attention to the written announcements included in the agenda pack. He added that several late Chairman's announcements had been received.</p> <p>Malcolm Beaven is our new Area Highways Engineer, based in Chippenham (following Sally Barnett's decision to take up a post in the south of the county). Malcolm was happy to be contacted by telephone, email or letter. Malcolm can be contacted via CLARENCE on 0800 232323 or 01249 445554, <a href="mailto:northernhighways@wiltshire.gov.uk">northernhighways@wiltshire.gov.uk</a>, or by writing to Bath Road Industrial Estate, Chippenham, Wiltshire, SN14 0AB.</p> <p>Health experts were still keen to encourage all people who were deemed 'at risk' of serious illness from seasonal flu to get the vaccination from their GP, if they haven't done so already. For clarity, the swine flu strain of flu was now covered in the seasonal flu vaccine. GPs were responsible for ordering the supplies and</p>	

	<p>there were plenty in Wiltshire. There was no question of a shortage and all 'at risk' people should have no problem getting the job.</p> <p>Malmesbury Area Board was inviting local young people to come up with ideas to help improve local transport and access to projects and activities, with £8,000 up for grabs for the best entries. Young people were invited to apply for funding (maximum of £1,500 per project) by Friday 18 March 2011 and those meeting the criteria would be invited to present their ideas to the Malmesbury Area Board on 4 May 2011. Application forms and funding criteria could be found on Sparksite, the Council's website for young people: <a href="http://www.sparksite.co.uk">www.sparksite.co.uk</a>, under the Malmesbury section. If anyone had any questions or would like help to develop their ideas into an application, please contact Gareth Brown on 01666 823747 or <a href="mailto:gareth.brown@wiltshire.gov.uk">gareth.brown@wiltshire.gov.uk</a> or Miranda Gilmour on 01672 515742 or <a href="mailto:Miranda.gilmour@wiltshire.gov.uk">Miranda.gilmour@wiltshire.gov.uk</a>.</p>	
6.	<p><u>Partner Updates</u></p> <p>The Chairman noted the written updates from partners included with the agenda pack and invited partners to add further information if appropriate.</p> <p>a) The written update from Wiltshire Police was circulated at the meeting, please find attached to the minutes. Inspector Chris Martin gave a short summary of his background in Wiltshire Police. Problems raised from the floor with cars parking over dropped kerbs at Hudson Road and outside St Mary's Hall were noted.</p> <p>Councillor Soden then gave a short presentation about proposed spending cuts to Wiltshire Police Authority. £15 million of savings were needed over the next four years (the current total budget for policing in Wiltshire was £107 million). Planned savings at present include nearly £4 million savings on general expenditure and £11 million from staff savings. There were no plans to change frontline numbers, there would be 11 Inspector led areas as now and Swindon and the County divisions were to be merged to give one Force wide service delivery.</p> <p>Councillor Soden asked the meeting to take part in the consultation by completing the questionnaire cards that were available, visiting the Wiltshire Police Authority website to complete the survey there: <a href="http://www.wiltshire-pa.gov.uk">www.wiltshire-pa.gov.uk</a>, or calling 01380 734022 for a hard copy of the plans and questionnaire.</p>	

	<p>b) The written update from Wiltshire Fire and Rescue Service was noted.</p> <p>c) The written update from NHS Wiltshire was noted.</p> <p>d) Sid Jevons highlighted main points in the written update from Malmesbury and the Villages Community Area Partnership (M&amp;VCAP). Following discussions with Malmesbury Town Council it was determined that this project was delayed and it was agreed that M&amp;VCAP would put on hold further involvement until the way forward had been clarified. The results of a speed bump survey for Malmesbury had been presented to the planning and environmental committee of Malmesbury Town Council on 4 January 2011. The committee thanked the Partnership for their work and this would now be examined by a sub-committee before recommendations were made to the full planning and environmental committee.</p> <p>e) There were no updates from Town and Parish Councils.</p>	
7.	<p><u>Local Transport Scheme Funding Allocation Group Feedback</u></p> <p>Councillors were asked to consider a report from the Local Transport Scheme Funding Allocation group and make recommendations on a range of transport schemes.</p> <p>Community Area Transport Groups (CATGs) had been set up in each Community Area to consider highway requests, identify priorities for transport investment and make recommendations to the Area Board on the schemes to be funded from the discretionary highways budget.</p> <p>In order to have a scheme considered for funding, parish and town councils would need to contact their Area Board Manager and raise it on the electronic community issues system. Members of the public and community groups could also request new transport schemes, although these would be referred to the relevant parish or town council by the Area Board Manager to ensure they are supported by them before they are considered by the CATG.</p> <p>The discretionary highways budget was to be used to provide new highways infrastructure, such as pedestrian crossings, footways, traffic calming, traffic management and cycle facilities. It could not be used to fund highway maintenance, the provision of speed limits and parking controls, public transport services and major highway schemes, for which other procedures and funding mechanisms</p>	

	<p>existed.</p> <p>The Chairman thanked the members of the CATG, Area Board members and nominated representatives, for their work.</p> <p><b><u>Decision</u></b>  <b>To allocate £3,000 towards replacing existing low level kerbing and overlay existing footway adjacent to Swann Close, Crudwell.</b></p> <p><b><u>Decision</u></b>  <b>To allocate £600 towards the installation of two ‘pedestrians in the road’ signs in Tetbury Lane, Crudwell, conditional on their suitability being confirmed by Officers.</b></p> <p><b><u>Decision</u></b>  <b>To allocate £5,000 towards the installation of halos to the zebra crossing outside Malmesbury primary health care centre and repainting of road markings in order to make it more obvious to road users.</b></p> <p><b><u>Decision</u></b>  <b>To allocate £600 towards the installation of two ‘pedestrians in the road’ signs on the bend between ‘The Green’ from opposite Olivermead Lane to ‘Sedgemoor’, Dauntsey, conditional on their suitability being confirmed by Officers and retained on the Community Area Transport Group list.</b></p> <p><b><u>Decision</u></b>  <b>To defer allocating the balance of the 2010/11 CATG budget towards improvements at North End Crossroads, Ashton Keynes, until Officers had revisited the site and investigated changes to signing and lining to improve safety.</b></p> <p>The Area Board also agreed to retain a number of schemes on the CATG request list, request further investigation at some sites and/or actions by partners and remove a number of schemes on the CATG request list, either because they were not possible to deliver or of lower priority, as indicated in the report in the agenda pack.</p>	
8.	<p><b><u>Community Issues Update</u></b></p> <p>The Community Area Manager provided a summary of current community issues and the Area Board agreed those to be closed. The Chairman thanked Miranda Gilmour and the highways departments for their work on solving issues. Councillor Killane advised the meeting to not be concerned about poor tarring at the</p>	

	<p>lower end of the High Street in Malmesbury because the highways department were looking into it.</p> <p><b><u>Decision</u></b>  <b>The Area Board would close the following issues:</b></p> <p><b>Issue 273, 637 and 430 – highways repairs and road surfacing had been undertaken, some of which would be finalised in the New Year, while speed bumps were being dealt with via a separate issue.</b></p> <p><b>Issue 440 – dropped curbs in Malmesbury had been installed outside the Rose &amp; Crown and access through Market Lane had been improved. The Council was not able to stop vehicles parking in front of a garage in St John’s Street.</b></p> <p><b>Issue 1133 – a footpath opposite Malmesbury Primary Care Centre had been repaired.</b></p> <p><b>Issue 1135 – the footpath between Lea village hall and The Street was submitted in 2010/11 for major maintenance but was not deemed a priority compared to other schemes. The Area Office would continue to submit this project for treatment.</b></p> <p><b>Issue 1393 – re-decoration work had been completed at Sherston village hall by the Community Payback Scheme.</b></p> <p><b>Issue 1270 – changes to the Park Road, Malmesbury bus stop would be considered in 2011/12.</b></p> <p><b><u>Decision</u></b>  <b>The Area Board would close a further five issues which had been considered by the Local Transport Allocation Group (item 7).</b></p> <p><b><u>Decision</u></b>  <b>The Area Board would consider the issue of speed bumps in relation to consultation data at a future Area Board meeting.</b></p>	
9.	<p><b><u>Face to Face Customer Access to Council Services</u></b></p> <p>Jacqui White, Service Director for Shared Services and Customer Care, gave a short talk about the move to identify possible venues for face to face contact with Wiltshire Council customers in the Malmesbury Community Area.</p> <p>Wiltshire Council Officers were working to visit customers more in</p>	

	<p>their homes and in their local area as this was the most efficient way of doing business. The Customer Care team were seeking suggestions for venues where Officers could go and meet customers and there would be the technology and a kiosk for virtual visits. Please get in touch if you have any suggestions for suitable venues.</p> <p>Further comments and enquiries to: John Rogers, Head of Customer Access, on 01225 756191 or <a href="mailto:john.rogers@wiltshire.gov.uk">john.rogers@wiltshire.gov.uk</a>.</p>	
10.	<p><u>Part Night Lighting</u></p> <p>Project Officer Mark Allen asked Councillors to consider a report from Malmesbury and the Villages Community Area Partnership and make recommendations on where reductions in lighting could be made, as in the agenda pack.</p> <p>Councillors of the Area Board were very supportive of this scheme and would like to see this approach extended in 2011/12 to enable other parishes to participate in the future.</p> <p><b><u>Decision</u></b>  <b>Up to the full allocation of lights would be turned off with the available funding, as in the recommendations of the report from Malmesbury and the Villages Community Area Partnership.</b></p>	
11.	<p><u>Area Board Funding</u></p> <p>Councillors were asked to consider the Community Area Grants report and make recommendations on the applications received.</p> <p><b><u>Decision</u></b>  <b>Malmesbury Lawn Tennis Club were awarded £2,000 towards the refurbishment of two existing tennis courts, conditional on the balance of funding being in place.</b></p> <p><b><u>Reason</u></b>  <b><i>The application meets the 2010/11 grant criteria and there is specific reference in the Community Plan to young people having greater access to tennis facilities.</i></b></p> <p><b><u>Decision</u></b>  <b>Twynnoy Explorer Scouts were awarded £665 to enable the purchase of seven tents.</b></p> <p><b><u>Reason</u></b>  <b><i>The application meets the 2010/11 grant criteria and the</i></b></p>	



*application provides a range of activities and skills for the young people who live in the town and surrounding villages.*

**Decision**

**Crudwell Pre-School were awarded £3,215 towards replacing the surface of an external play area at Crudwell village hall, conditional on the balance of funding being in place and should other funding applications be successful, that this sum be returned to the Area Board.**

**Reason**

*The application meets the 2010/11 grant criteria and meets the local need to support early years, toddler groups and pre-schools in villages.*

**Decision**

**Ashton Keynes Millennium Green Trust were awarded £2,100 towards the cost of re-establishing a roadside hedge at the Millennium Green, as a wildlife habitat, conditional on the balance of funding being in place.**

**Reason**

*The application meets the 2010/11 grant criteria and helps to preserve and manage the countryside and wildlife.*

**Decision**

**Cotswold Water Park Trust were awarded £900 towards the involvement of children from the Malmesbury Community Area participating in willow lantern workshops and pageant, conditional on the balance of funding being in place.**

**Reason**

*The application meets the 2010/11 grant criteria and will provide a leisure activity for young people while at the same time acquiring new skills.*

**Decision**

**Little Somerford Parish Hall were awarded £790 to provide new entrance doors for the hall.**

**Reason**

*The application meets the 2010/11 grant criteria and the availability of local village halls is valued by all members of the community by providing a venue for a variety of social activity.*

**Decision**

**Malmesbury and the Village Community Area Partnership**

	<p>were awarded £468 towards the cost of publicity and communications material.</p> <p><b><u>Reason</u></b>  <i>The application meets the 2010/11 grant criteria and will help M&amp;VCAP to raise their profile within the community, particularly as they undertake more consultative work.</i></p> <p><b><u>Decision</u></b>  <b>£8,029 (£4,029 youth transport allocation from Cabinet plus £4,000 matched funding from the Area Board) would be ring fenced and a request would be made to Cabinet that funding was carried over to 2011/12 to enable delivery of a participatory budgeting event for young people addressing their transport and access needs.</b></p> <p>An application from Luckington Children’s Playground Trust had been withdrawn for amendment and would be resubmitted for consideration at the next Area Board meeting. The Chairman emphasised that the deadline for the next round of funding was 31 January 2011 and £8,024 was available to be spent in the Community Area.</p>	
12.	<p><b><u>Performance Reward Grant Scheme</u></b></p> <p>To note, since the November Area Board meeting, members of the Area Board had approved an application from ‘DEVELOP Enhancing Community Support’, circulated to all Wiltshire Area Boards for the provision of an accredited volunteer centre for Wiltshire. This would bring benefits to all Community Areas in Wiltshire, providing better access to volunteering opportunities and support to individuals, an employer volunteering scheme, specialised support, information and good practice services, access to draw down further funding and access to national support and information.</p>	
13.	<p><b><u>ISWE and Malmesbury Community Area</u></b></p> <p>The Community Area Manager introduced ISWE, a pilot website designed specifically around the Malmesbury Community Area. The website would help with community planning by enabling conversations on topics in the local area, hosting forums and blogs, information gathering, displaying news and updates and connecting with local people who do not usually attend meetings. The Community Area Manager emphasised that the new website would supplement malmesbury.com.</p> <p>The Chairman asked for a show of hands regarding who was in support of piloting the new website. A large majority of those at the</p>	

	meeting did support a pilot scheme.	
14.	<p><u>Public Consultation</u></p> <p>The Chairman explained that information on the public consultations taking place was included in the agenda pack. Councillor Killane drew attention to the dog control consultation as an opportunity to call for banning dogs from certain children's play areas. The consultation was available for public comment until 7 February 2011 at the following link: <a href="http://www.wiltshire.gov.uk/council/consultations.htm">http://www.wiltshire.gov.uk/council/consultations.htm</a>. Further information was available from Simon Cleaver, Pest Control and Dog Warden Service Manager, 165 Bradley Road, Trowbridge, BA14 0RD, or <a href="mailto:simon.cleaver@wiltshire.gov.uk">simon.cleaver@wiltshire.gov.uk</a>.</p>	
15.	<p><u>Cabinet Representative</u></p> <p>Councillor Thomson's overview of his Cabinet role and responsibilities as Deputy Leader would be deferred until after the Wiltshire Council budget, when further information would be available.</p>	
16.	<p><u>Evaluation and Close</u></p> <p>The Chairman provided the opportunity for any other business to be raised. Cotswold Water Park was highlighted as a local resource that would become a new open membership organisation by April 2011. Concern over increases to long stay parking charges for local employees was spoken about. Wiltshire Council was in discussion with Chambers of Commerce regarding having season tickets at concessionary rates for certain car park users. The Chairman advised to contact Malmesbury Chamber of Commerce to find out more information or to contact Councillor Dick Tonge, Cabinet Representative for Highways and Transport, on 01225 742471 or <a href="mailto:Richard.tonge@wiltshire.gov.uk">Richard.tonge@wiltshire.gov.uk</a> directly.</p> <p>The Community Area Manager then invited those present to indicate their views about the meeting, using coloured post it notes.</p>	

This page is intentionally left blank

## **Chairman's Announcements - 16 March 2011**

### **Help Tomorrow Take Shape - The 2011 Census**

The 2011 Census is coming:

- The census has collected information about the population every ten years since 1801 (except in 1941). The next census in England and Wales is on 27<sup>th</sup> March 2011
- The 2011 Census will produce a high quality estimate of the population. It is a count of the people and households in England and Wales. The census is carried out by the Office for National Statistics (ONS) on behalf of Parliament
- Everyone is asked the same questions in order to take a snapshot of the population at one moment in time
- The census tells us how many people live where and the types of people they are, for example whether they are young, old, married, single, etc. This means decisions, like working out who needs facilities in the future, are focused on accurate, relevant details
- You can find out all general information about the census at [www.census.gov.uk](http://www.census.gov.uk)

The 2011 Census is vitally important for Wiltshire and its communities:

- Census data is used to ensure that all the required local facilities and services needed across Wiltshire can be accurately identified
- Central funding allocation for Wiltshire is heavily influenced by the census data – it is estimated that Wiltshire Council will potentially lose around £500 per person per year for 10 years for every person not counted

What Wiltshire Council and ONS would like local councils to do:

- Publicise and promote the 2011 Census in your community
- Use your expert local knowledge to let us know about potential areas that may be hard to count in your community such as travellers, communes, religious establishments, migrant workers for example
- Promote locally that there are around 250 Census jobs being created across Wiltshire in 2011 and, as well as getting paid, that this is a great opportunity for knowledgeable local people to be part of something that will benefit their community. You can find out more information and apply for all available jobs at [www.censusjobs.co.uk](http://www.censusjobs.co.uk).

This page is intentionally left blank





## Report for Malmesbury Area Board – March 2011

### Fires

WFRS attended 15 accidental fires during the months of January and February 2011 involving a car, a roof, boxes of paper, a chip pan and an oven fire. The remaining incidents were chimney fires.

It is pleasing to report that we were not called to attend any deliberate fires during the same period. WFRS continue to work closely with the police and other partners to try and identify persons responsible for deliberate fire setting.

### Injuries

There have been no fire related injuries during this period.

### RTC'S

WFRS were not called to attend any Road Traffic Collisions within the Boards area during January or February 2011.

### Co-Responder Calls

WFRS have responded to 13 co-responder calls over this period.

### Community Safety

Wiltshire Fire & Rescue Service continues to remind people about the importance of getting chimneys swept after being called to several chimney fires during the winter period.

The Service's advice is to ensure that chimneys for wood burning fires are swept every three months when in use. If you burn bituminous coal, the chimney should be cleaned at least twice a year, and at least once a year when burning smokeless coal. An annual clean is sufficient for oil and gas fires. Other tips include:

- Have the chimney properly swept – using a vacuum cleaner alone is not sufficient.
- Make sure your fire receives enough air to allow the fuel to burn properly.
- Only burn suitable fuels.
- Do not overload the grate or appliance.
- Maintain your appliance in accordance with the manufacturer's instructions.
- Use a fire or spark guard to prevent accidental fires.
- Inspect your chimney breast, particularly in the roof space. Make sure that it is sound and that the sparks or fumes cannot escape through cracks or broken bricks.
- Make sure you are not at risk from carbon monoxide poisoning by having appliances installed and serviced by competent engineers. Fit a carbon monoxide detector and never block air bricks, vents or flues.
- Extinguish the fire before going to bed or leaving the house.

A wide range of fire safety advice can be found on the Wiltshire Fire & Rescue Service website - [www.wiltsfire.gov.uk](http://www.wiltsfire.gov.uk)

This page is intentionally left blank



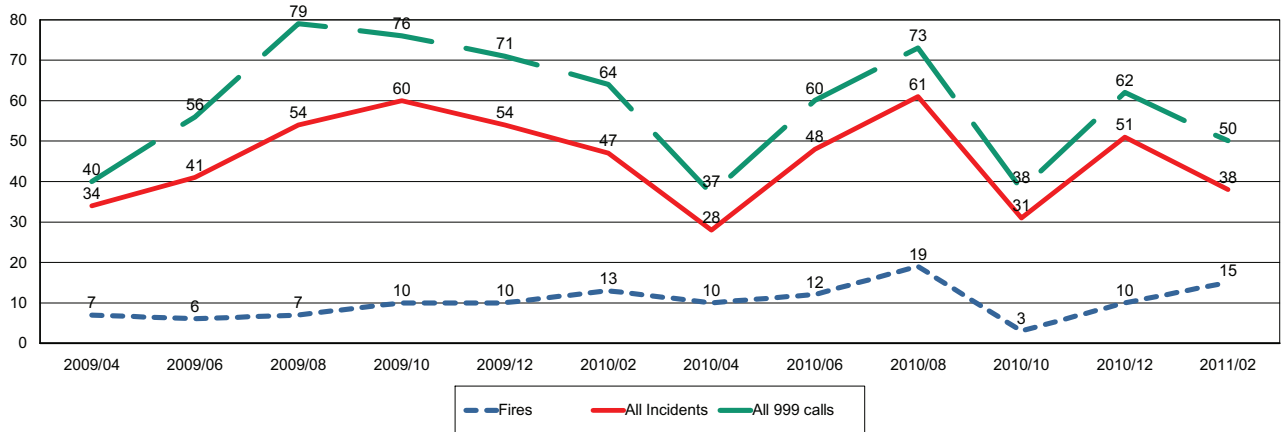
# Wiltshire Fire & Rescue Service

Wiltshire and Swindon Fire Authority

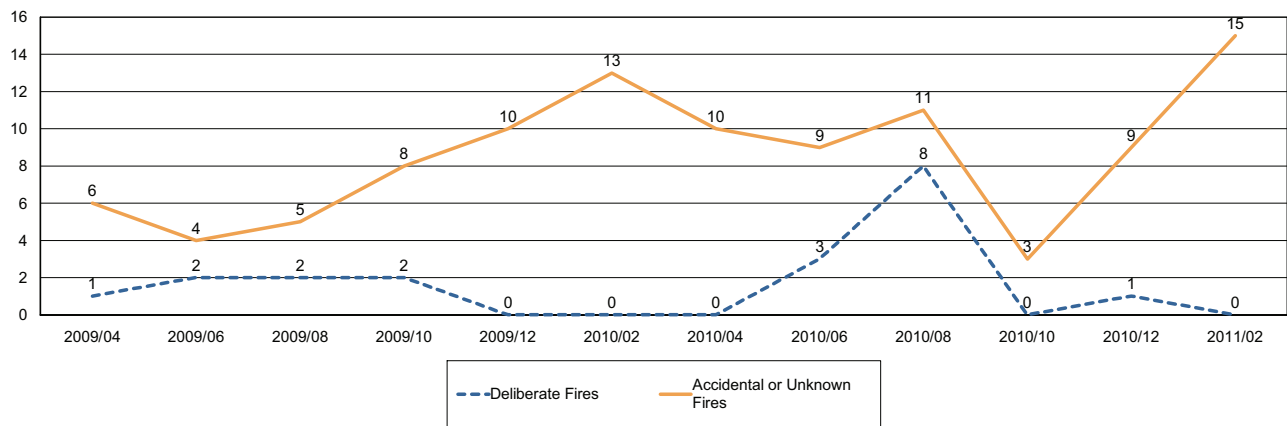
## Report for Malmesbury Area Board

The following is a bi-monthly update of Fire and Rescue Service activity up to and including February 2011. It has been prepared by the Group Manager for the Board's area.

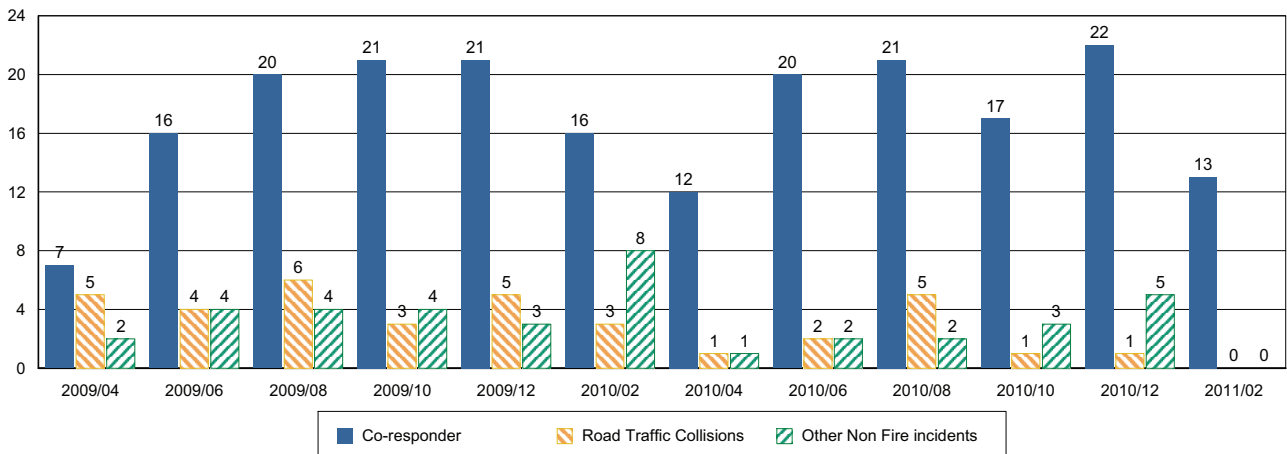
### Incidents and Calls



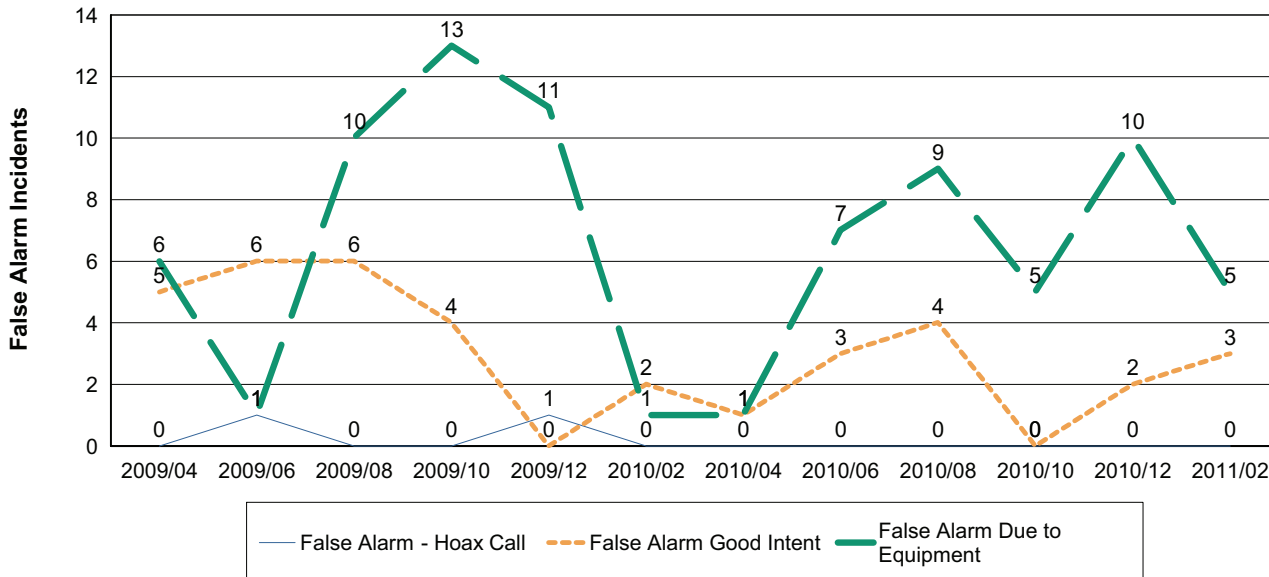
### Fires by Cause



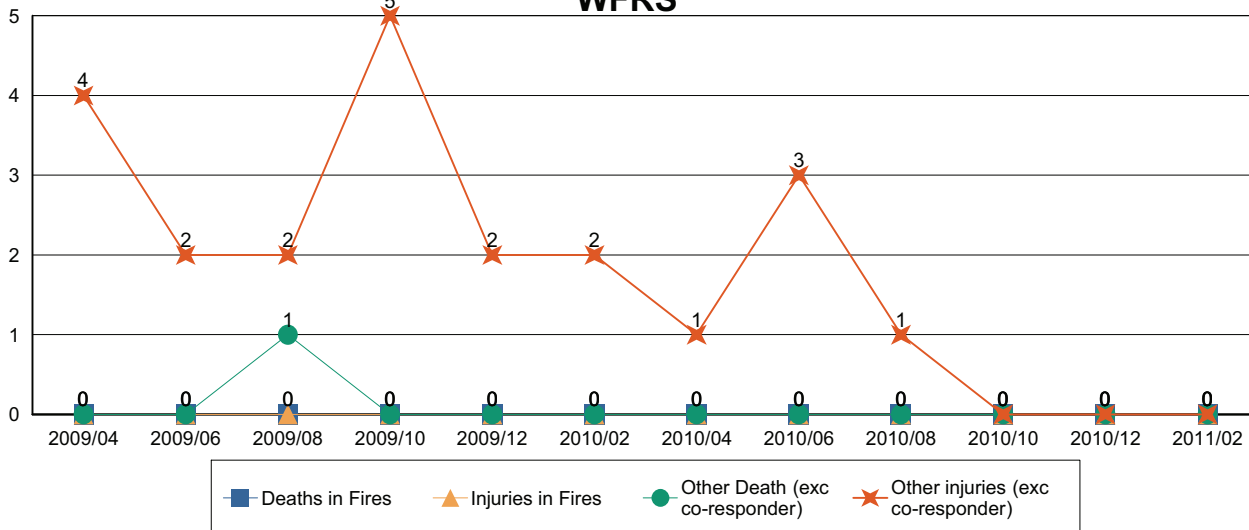
### Non-Fire incidents attended by WFRS



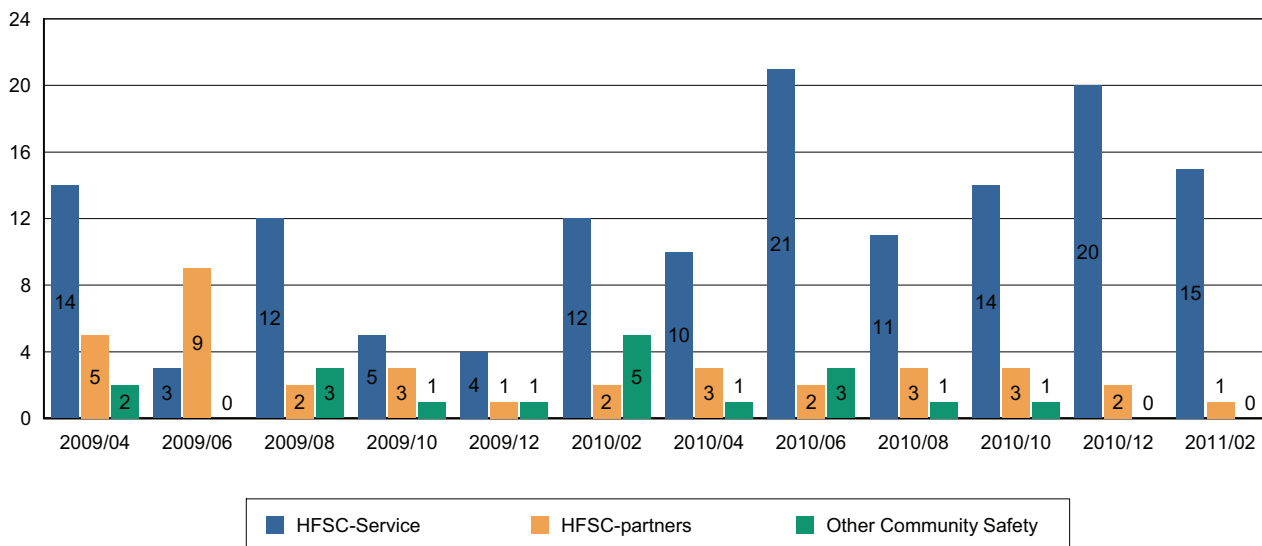
### Number of False Alarm Incidents



### Death & Injuries in incidents attended by WFRS



### Home Fire Safety Checks and other domestic safety



Comments and Interventions overleaf

## **NHS Update – March 2011**

### **South West has the highest proportion of people who smoke ‘roll-ups’**

Smokefree South West launches a major campaign in Wiltshire in early March, targeting the 33% of smokers in the South West, the highest in the country, who use hand rolling tobacco. The first of its kind, it will highlight its inherent health risks and dispel the myths that have built up around it.

The campaign, which has been backed by Cancer Research UK and the Faculty of Public Health, will be seen across Wiltshire, including eye catching billboards, support packs for smokers looking to quit and hard-hitting radio and television adverts premiering today.

The cost of hospital admissions for users of hand rolling tobacco in the South West ran to approximately £31.7m in 2008/09, this represents an estimated £6 for every person in the South West.

Smokefree South West has developed a brand new Wise-Up to Roll-Ups pack, in the style of a hand rolling tobacco pouch, containing information about hand rolling tobacco and quitting tools to aid smokers to quit hand rolling tobacco. Smokers can order a pouch, by texting **WISE** to a unique text number, 0800 028 0553, or by going online to our dedicated website [www.wiseupandquit.co.uk](http://www.wiseupandquit.co.uk). Leaflets and posters will also be placed in GP surgeries across the South West.

### **New NHS Stop-Smoking drop-in clinic for Westbury**

Westbury smokers wanting to take the first steps to freedom from the habit will have a new option on their doorstep, with the opening of NHS Wiltshire’s Saturday drop-in clinic at The Laverton in Bratton Road. The clinic has been set up in response to increasing demand for support to stop smoking, and will open on Saturday 26 February 2011, initially running for a 12-week pilot.

There is already an award-winning stop smoking clinic established in Westbury on Tuesday evenings which has proved a great success with people giving up and becoming smoke free. The Westbury clinic at the Hospital has attracted over 100 smokers since April 2010 with 65 per cent of those being smoke free four weeks after setting a quit date.

For information on how to get off the cigarettes, your local NHS Stop Smoking Service is the first place to call – phone 01380 733891. Alternatively people can visit <http://www.wiltshire.nhs.uk/> for more information to help them make this important move.

### **Chippenham Hospital CQC Inspection**

In early February, the Care Quality Commission (CQC) which is the independent regulator of health and social care services in England, published a report following its visit to Chippenham Hospital in December 2010.

The visit was one of a programme of unannounced inspection visits to NHS facilities. Inspectors looked at the hospital environment, spoke to patients and staff on two wards and in the minor injuries unit, and reviewed a range of information.

The report identified that the Care Quality Commission has minor concerns about *some* aspects of the service on Beech Ward at Chippenham Hospital. It also found that new mothers praised staff on Chippenham Birthing Unit for their patient support with breastfeeding, and in the minor injuries unit staff were described as cheerful and welcoming.

Wiltshire Community Health Services (WCHS), which runs Chippenham Hospital, has welcomed the report, and acknowledged the areas where the CQC defined it has minor concerns. Responding, Annie Kelly, WCHS Director of Nursing with responsibility for the quality of patient care, said: "We take all the concerns seriously and are finalising a robust action plan, detailing how we can work with staff and others to ensure that we are providing the high quality care that people rightly expect."

### **Director of Public Health thanks health colleagues as flu numbers drop**

This year's seasonal influenza virus appears to be on the decrease this month after a difficult winter. Maggie Rae, Director of Public Health for Wiltshire, praised staff for their dedication and commitment over the last few months.

"As the person with responsibility for the public health of the people of Wiltshire, I would like to give my thanks to the GPs, hospital doctors, nurses, pharmacists and NHS Wiltshire's Primary Care Team who have done a tremendous job this winter – as they do every winter – in keeping the local health service running effectively. All the health and social care staff have done an excellent job, and thanks to their efforts, along with appropriate self-treatment and use of services by local people, we have managed very well".

Influenza is still circulating in our communities, although at much lower levels than we saw over the Christmas period.

### **Next NHS Wiltshire Board Meeting**

The next Board meeting of NHS Wiltshire will be held on **Wednesday 16 March at 10am - 2011 at Southgate House**. Members of the public are welcome to attend.

Papers are published a week before the meeting on [www.wiltshire.nhs.uk](http://www.wiltshire.nhs.uk) or on request from Stacey Saunders, NHS Wiltshire (tel: 01380 733839, email: [stacey.saunders@wiltshire.nhs.uk](mailto:stacey.saunders@wiltshire.nhs.uk)). For further information or copies of documents referred to above, please contact Jo Howes, Community Engagement Manager, 01380 733929 or [jo.howes@wiltshire.nhs](mailto:jo.howes@wiltshire.nhs)



## **Update From: Malmesbury and the Villages Community Area Partnership. (M&VCAP) - Date of Area Board Meeting: 16<sup>th</sup> March 2011**

### **Headlines**

The Community Safety forum which took place at Malmesbury Town Hall on Thursday 6 January 2011, theme being 'young people' was attended by representatives from the local Police, Wiltshire Council, Fire and Rescue and various organisations. A copy of the full report can be obtained from the Administrator.

The website has a complete new look and is now up to date.

At the last meeting of the Group, Pete Smith the Youth Development Team Leader covering rural North came and gave an insight to the services his team aims to provide. It is intended to work closely with him in order to launch a 'Dreamscheme' in the Malmesbury and surrounding areas.

### **Issues/Projects**

Reduced Street Lighting - in the final process

Speedbumps - report with Malmesbury Town Council

Liaison with Parish Councils - Valuable links have been formed through the above projects.

A working Party has been formed to look at proposed projects for 2011. The following will be researched with a view to adopting as future projects. Action plans are being drafted for each project and will be available for the meeting with the Area Board on the 12<sup>th</sup> April 2011.

Community Engagement:

- MVCAP Dove Initiative - Community Hub
- Izwe Social Network
- Event Hosting - Community Safety, Freshers Fair, Area Planning/Localism/Housing, Green Community/Environment
- PR Team - e.g MVCAP 'Corporate' identity, MVCAP Newsletter, Publicity, Stalls at events.
- Longer Term - Malmesbury area newsletter.

Transport:

- Transport event follow-up
- MVCAP Bus for events - eg cinema, Link
- Improvement of Malmesbury - Tetbury bus service
- Longer Term - Scheduled volunteer bus service

Youth:

- Collaborate on Dreamscheme .

Ongoing General:

- Reduced street lighting
- Rural Broadband
- Parish engagement
- MVCAP green - reducing MVCAP environmental impact

If anyone would be interested in becoming involved in any of the above projects we are always looking for volunteers. You would be made most welcome. Please contact Sue Webb on email: [dennis.webb01@virgin.net](mailto:dennis.webb01@virgin.net)

**Future Events/Dates for the Diary:**

Dates for Steering Group meetings for 2011 are: 30<sup>th</sup> March, 19<sup>th</sup> April, 31<sup>st</sup> May, 6<sup>th</sup> July, 9<sup>th</sup> August, 20<sup>th</sup> September (AGM), 2<sup>nd</sup> November, 13<sup>th</sup> December. All meeting will commence at 7pm and venue to be agreed. (Please check on website in case of changes). The venue for the 30<sup>th</sup> March is The Mayor's Parlour, Town Hall, Malmesbury.

A handwritten signature in black ink, appearing to read 'D Webb', with a small horizontal line at the end.

Co-coordinator/Administrator for M&VCAP - Dated 2<sup>nd</sup> March 2011

<b>Report to</b>	<b>Malmesbury Area Board</b>
<b>Date of Meeting</b>	<b>16 March 2011</b>
<b>Title of Report</b>	<b>Malmesbury Community Issues Update</b>

**Purpose of Report**

To provide a Community Issues update and invite members of the Area Board to:

1. Close 4 issues.
2. Refer 4 issues to the next Malmesbury Community Area Transport Group (CATG)
3. Consider the issue of speed bumps elsewhere on this agenda.

## 1. Background

- 1.1. At the time of writing (23 February 2011), a total of 73 community issues have been received, of which 53 have been closed and 20 are in progress. There are currently no new requests.

<b>Background documents used in the preparation of this Report</b>	Malmesbury community issues online at: <a href="http://www.wiltshire.gov.uk/communityandliving/areaboard.htm">http://www.wiltshire.gov.uk/communityandliving/areaboard.htm</a>
--	---

## 2. Main Considerations & Officer Recommendations

### 2.1. Closure of Issues

- 2.1.1. The area board are invited to close the following 4 issues (emboldened in Appendix 1)

2.1.2. **Issue 1129** – speeding vehicles in Leigh will be managed through a Community Speedwatch (CSW) scheme which the parish council are keen to establish and in the meantime a Speed Indicator Device will be installed, at least until CSW is operating, as metro counts recorded excessive speeds in the village.

2.1.3. **Issue 1363** – perceived night time speeding in Dark Lane Malmesbury, is being passed to the police to monitor. To date no excessive speeds have been recorded.

2.1.4. **Issue 1482** – the adoption of open space associated with specific properties at Abbey Height is a personal and not a community matter.

2.1.5. **Issue 1443** – dog fouling in the Hudson Road /Glovers Court area of Malmesbury has and will continue to be monitored and additional signage has been provided.

### 2.2. Issues to be considered by the Malmesbury Community Area Transport Group (CATG)

2.3. The following issues will form agenda items on the next CATG agenda: **334, 562, 620 and 656.**

### 2.4. Malmesbury Traffic Calming and other highways measures

2.4.1. **Issue 438** relates to a speed bump survey undertaken by Malmesbury & Villages Community Area Partnership and Malmesbury town council and subsequent report and recommendations from Malmesbury town council. This matter will be considered elsewhere on this agenda.

### **3. Environmental & Community Implications**

- 3.1. Addressing community issues contribute to the improvement of community wellbeing in the area, the extent and specifics of which will be dependent upon the individual issue.

### **4. Financial Implications**

- 4.1. There are no specific financial implications related to this report.

### **5. Legal Implications**

- 5.1. There are no specific Legal implications related to this report.

### **6. HR Implications**

- 6.1. There are no specific HR implications related to this report.

### **7. Equality and Inclusion Implications**

- 7.1 The opportunity to raise Community Issues enables individuals, voluntary and community groups, town and parish councils an equal opportunity to identify and seek assistance to address problematic issues.

<b>Appendices:</b>	<b>Appendix 1 - Malmesbury Area Board Community Issues – Progress Table</b>
--------------------	---

Unpublished documents which have been relied upon in the preparation of this report include notes arising from the two LTP Allocation Group meetings.

<b>Report Author</b>	Miranda Gilmour, Community Area Manager Tel: 01672 515742 Mobile:07990 505882 E-mail: <a href="mailto:miranda.gilmour@wiltshire.gov.uk">miranda.gilmour@wiltshire.gov.uk</a>
----------------------	---

This page is intentionally left blank



## Malmesbury Area Board Issues - Update

ID	Category	Division	Summary of Issue	Status
406	Car Parking	Malmesbury	Residents Parking in Malmesbury	Councillor Dick Tonge attended the 10 November 2010 area board, giving a presentation about feedback to the recent consultation about car parking. About Residents Parking Zones he said, this is being reviewed by Cabinet in December and is part of the Parking Consultation. The recommended criteria are shown in the consultation document. When the policy has been agreed officers will look at all demands and set priorities. This information will be brought back to the Area Boards.
655	Car Parking	Malmesbury	St Josephs seek parking permits for Cross Hayes	Councillor Dick Tonge attended the 10 November 2010 Malmesbury area board when this issue was responded to: Cllr Tonge said that currently there were two schools that had a car park concession like the one suggested. The purpose of the agreement was to reduce congestion outside the schools. It only applies where car parks have spare capacity at school opening and closing times. This arrangement is under review to ensure that we have a consistent policy. This will be agreed in March, after which it will be brought to the Area Board to establish if St Josephs is eligible. Any arrangements will have to be agreed by the local Chamber of Commerce.
1074	Car Parking	Malmesbury	Access to car parking by Glovers Courts residents	Options are being explored with Westlea.
1226	Car Parking	Malmesbury	Enable car parking on grass on corner of Burnham/Hudson Road	Councillor Dick Tonge attended the 10 November 2010 Malmesbury Area Board where he gave a presentation about the feedback to the consultation about car parking undertaken during the summer. In respect to enabling car parking on the grass on corner of Burnham/Hudson Road he explained that the policy of overspill parking is part of the Parking Strategy that will be considered by Cabinet in December. The policy will be fed back to the Area Board early in the Spring

## Malmesbury Area Board Issues - Update

334	Highways	Minety	Safety at North End Crossroads, Ashton Keynes	The Malmesbury CATG met in September and December 2010 to consider small scale transport and highway improvement schemes. They recommended that they should defer allocating the balance of the 2012/11 CATG budget (of £3,160) to improvements at North End Crossroads, Ashton Keynes, until officers had revisited the site and investigated changes to signing and road lining to improve safety. This recommendation was approved by the area board on 19 January 2011.
438	Highways	Malmesbury	Remove or replace speed bumps in the town	Malmesbury & Villages Community Area Partnership presented the joint speed bump survey report to the town council on 4 January 2011. The town council agreed that Cllr Sanderson would establish a working group to examine the report and determine a list of agreed recommendations and actions. The town council were invited by the area board to submit their report for consideration at the 16 March 2011 area board.
562	Highways	Malmesbury	Crossing needed on Tetbury Hill Road near Filands.	Malmesbury CATG to be advised that Malmesbury Primary School have not updated their School Travel Plan and are therefore not eligible to apply for Taking Action on School Journeys - funding that could have contributed towards the cost of a crossing at Filands/Tetbury Hill Road. The area board agreed on 19 January 2011 that this issue would remain on the 2011/12 Malmesbury CATG list.
620	Highways	Brinkworth	Footpath required in Dauntsey. There is no footpath for a significant stretch of the road called The	This issue was mistakenly closed, having being confused with another part of the same road. The Malmesbury CATG recommended that officers re-visit to investigate whether pedestrians in the road signs would be helpful/possible at this site. The approximate cost and installation of 2 signs would be £600. The issue would remain on the Malmesbury CATG list.

## Malmesbury Area Board Issues - Update

656	Highways	Malmesbury	Safe Routes to St Joseph's school	Malmesbury CATG to be advised that St Josephs Primary School did not make a revised bid for Taking Action on School Journeys funding that could have contributed towards pedestrian safety of children at the school. The area board agreed on 19 January 2011 that this issue would remain on the 2011/12 Malmesbury CATG list.
906	Highways	Brinkworth	Poor condition of unclassified road between Lea - Cleverton	Contact has been made with the parish council. Some private ditching works are required and some patching of the carriageway. The highways department will then endeavour to get this site on 2011/12 surface dressing list.
1129	Highways	Minety	Speeding vehicles in Leigh on B4040	<b>Metro count results indicated the 85th percentile was 51.7mph (the 85th percentile is the speed at which 85% of the traffic is travelling at or below). The Parish Council have been contacted and they are keen to undertake Community Speedwatch and are currently encouraging a team of people to come forward. In addition because speeding is excessive this sites has been identified as being suitable for a Speed Indicator Device (SID), at least until CSW in up and running</b>
1363	Highways	Malmesbury	Perceived night time speeding Dark Lane, Malmesbury	<b>This issue is being referred to the police. To date the police report they have not received any other complaints about speeding in this area and highest speeds recorded are under 25mph.</b>
1492	Highways	Malmesbury	Repeat repair of highways required in Malmesbury	Officers are aware of the problem and will be re-visiting failure sites to establish the cause of failures and ensure they are rectified. This process will start shortly.
1493	Highways	Malmesbury	Surface water opposite 58 Abbey Row, Malmesbury	This issue would benefit from some patching to reduce the area where water can pond. The Area Highways Office will see if this can be included when the remedial works to the other patching sites are addressed.
1494	Highways	Malmesbury	Poor state of B4040 between water tower and The Spice Merchant	This stretch of road will be added to the Area Highways list for consideration for maintenance during 2011/12

## Malmesbury Area Board Issues - Update

1475	Property	Malmesbury	Maintenance of communal landscaping at Loiret Crescent, Malmesbury	Open space at the development in which Loiret Crescent is situated has not yet been adopted by Wiltshire Council from the developers, Persimmon. It is hoped that this will happen this summer (2011). In the meantime the developers are responsible for maintenance and council officers are following this up.
1482	Property	Malmesbury	<b>Council to adopt Abbey Heights Estate entrance, Malmesbury</b>	<b>The land mentioned in this request has already been transferred from Persimmon to the resident(s) and cannot form a part of the main adoption of land up at Filands. It would be possible for the Council to adopt the land from the residents, but costs would be involved for future maintenance and the council's legal costs.</b>
1443	Public Protection	Malmesbury	<b>Dog fouling on Hudson Road and Glovers Court area, Malmesbury</b>	<b>The dog warden has provided additional signs in the vicinity and patrolled the area to advise responsible dog ownership and to catch any offenders.</b>
1491	Public Protection	Malmesbury	Dog fouling on Gloucester Road, Malmesbury	Forwarded issue to the Dog Warden for surveillance
1484	Waste	Malmesbury	Litter at the rear of Malmesbury Youth Development Centre	Contacted Malmesbury Youth Development staff to look into the matter

Glossary

CATG - Community Area Transport Group

## **SPEED REDUCING SURVEY** **Results of Town Council/M&VCAP SRC Survey** **January 2010**

### **Conclusions**

- 1 There is very little support for additional speed reducing measures such as chicanes or pelican crossings.
- 2 Whilst the majority of respondents are against any form of calming at most of the locations listed, there is also a significant percentage (ranging between 41% to 60%) who agree that Speed Reducing Cushion's (SRC) are the preferred means of speed calming.
- 3 Depending on the SRC location a significant percentage ranging between 24% to 88% would like to have full width cushions.
- 4 With respect to the Triangle junction (where no Speed Reducing Cushions exists at present) the number of respondents are in favour of speed calming at this junction almost equals those who are against such an installation. That said, 87% of respondents are also in favour of a full width cushion(s), but no specific point for this is identified. This also the case for the entrance to Cross Hayes which already has a full width but rounded profile cushion.
- 5 A number of elderly respondents have reported physical discomfort when traversing the existing angular SRCs, and some driver respondents have also reported suspension damage to their vehicles. (This occurrence has been confirmed by a national survey conducted by Rob Gifford of PACT (Parliamentary Advisory Council for Transport Safety)

### **Observations**

Many vehicles and especially 4 x 4's are able to straddle the existing angular humps thus limiting their potential for persuading motorists to drive more slowly.

### **Recommendations**

- 1 The present 20 mph speed zone be changed to a 20mph speed **LIMIT** and extended to cover the whole of the town's conservation area.
- 2 Subject to funds being available all angular cushions to be given a flat profile to remove their jolt producing angularity, and extended to full road width to improve their effectiveness. Being flat they could be used by pedestrians to cross the road.
- 3 Where an SRC has to be removed as part of work to remedy a road defect or to repair utility services, the need for it to be replaced and the form it should take to be reviewed and agreed with Malmesbury Town Council.
- 4 MTC to debate the need for appropriately profiled SRC's to be installed at the Triangle and a change of format of the others, with the Highway Engineers and report their findings to Wiltshire County through the Area Board.

This page is intentionally left blank

<b>Report to</b>	<b>Malmesbury Area Board</b>
<b>Date of Meeting</b>	<b>16 March 2011</b>
<b>Title of Report</b>	<b>Area Board Funding</b>

**Purpose of Report**

To ask councillors to consider 3 applications seeking 2010/11 Area Board Grants and the following officer recommendations:

1. Minety Village Hall – award £1,504 towards the refurbishment of toilets, conditional on the balance of funding being in place.
2. Glovers Court Amenity Group – award £178 towards the purchase of blackout blinds, conditional on the balance of funding being in place.
3. Malmesbury River Valleys Trust – award £120 towards the cost of providing educational materials.

## 1. Background

- 1.1. Area Boards have authority to approve Area Grants under powers delegated to them by the Deputy Leader and Cabinet member for Community Services (27 February 2010). Under the Scheme of Delegation Area Boards must adhere to the Area Board Grants Guidance for funding.
- 1.2. In accordance with the Scheme of Delegation, any decision of an Area Board that is contrary to the funding criteria and/or the officer's recommendation would need to demonstrate that the application in question has a wider community benefit, and give specific reasons for why this should justify an exception to the criteria.
- 1.3. In accordance with the Area Board Grants Guidance officers are required to provide recommendations in their report, however, the decision to support applications and to what level is made by Wiltshire Councillors on this Area Board.
- 1.4. Funding applications will be considered at every Area Board meeting.
- 1.5. During 2010/2011 all applicants are being encouraged to contact Charities Information Bureau who is working on behalf of Wiltshire Council to support community and voluntary groups, town and parish councils to seek funding for community projects and schemes both from the Area Board and other local and national funding sources.
- 1.6. A decision has been made in 2010/2011 that paper copies of funding applications will no longer appear as part of the agenda in an attempt to reduce volume of paper used. However, the application forms will be available on the Wiltshire Council web site and hard copies available upon request.
- 1.7. The 2010/2011 funding criteria and application forms are available on the council's website ([www.wiltshire.gov.uk/areaboards](http://www.wiltshire.gov.uk/areaboards)) or paper versions are available from the Community Area Manager.

<b>Background documents used in the preparation of this Report</b>	<ul style="list-style-type: none"><li>• Community Area Grant Application Pack 20010/11</li><li>• How you view where you live - Malmesbury &amp; the Villages Community Plan 2009-2013</li></ul>
--	---



## 2. Main Considerations

- 2.1. Malmesbury Area Board was allocated a 2010/2011 budget of £40,593 for community grants, community partnership core funding and councillor led initiatives. The carry forward from the 2009/2010 budget was £682, resulting in a balance of £41,275.
- 2.2. At the 12 May area board, funding totalling £4,230 was distributed, leaving a balance of £37,045.
- 2.3. At the 7 July area board community area grants totalling £4,420 was approved, leaving a balance of £32,625.
- 2.4. The Area Board on 12 May 2010 agreed to fund £3,000 to the Malmesbury and the Villages Community Area Plan.
- 2.5. The Area Board agreed on 7 July 2010 to match fund the transport and young people project funding allocated by Cabinet by £4,000.
- 2.6. At the 15 September area board community area grants totalling £2,453 was approved, leaving a balance of £23,172.
- 2.7. At the 10 November area board community area grants totalling £4,665 were approved, leaving a balance of £18,109.
- 2.8. Funding for a speed detection device associated with the work of the Malmesbury Community Area Transport Group was found from another budget, resulting in £353 being retained by the area board, resulting in £18,462 being available for distribution.
- 2.9. At the January area board community area grants totalling £10,138 were approved, leaving a balance of **£8,324**
- 2.10. Councillors will need to be satisfied that grants awarded in the 2010/11 year are made to projects that can realistically proceed within a year of the award being made.
- 2.11. There have been 6 funding rounds during 2010/11, this one being the last.

## 3. Environmental & Community Implications

- 3.1. Community Area Grants will contribute to the continuance and/or improvement of cultural, social and community activity and wellbeing in the community area, the extent and specifics of which will be dependent upon the individual project.

#### **4. Financial Implications**

- 4.1. Awards must fall within the Area Boards budget allocated to the Malmesbury Area Board.
- 4.2. If grants are awarded in line with officer recommendations, Malmesbury Area Board will have a balance of **£6,522**.

#### **5. Legal Implications**

- 5.1. There are no specific Legal implications related to this report.

#### **6. HR Implications**

- 6.1. There are no specific HR implications related to this report.

#### **7. Equality and Inclusion Implications**

- 7.1. Community Area Grants give all local community and voluntary groups, Town and Parish Councils an equal opportunity to receive funding towards community based projects and schemes.
- 7.2. Implications relating to individual grant applications are outlined within section 8 – “Officer Recommendations”.

#### **8. Officer Recommendations**

Ref	Applicant	Project proposal	Funding requested
8.1.	Minety Village Hall	Refurbishment of toilets	£1,508

- 8.1.1. Officers recommend that Minety Village Hall is awarded £1,504 towards the refurbishment of toilets, conditional on the balance of funding being in place.
- 8.1.2. Officers are of the opinion that this application meets the 2010/11 grant criteria.
- 8.1.3. There is specific reference in the Malmesbury & Villages Community Plan 2009-2013 in respect to desire for village hall facilities to be improved.
- 8.1.4. The hall is regularly used by about 180 people each week, with a further 60 using it on a monthly basis and is an important community facility within Minety.
- 8.1.5. The village hall management group are embarking on a programme of refurbishments to the hall, with the ladies, gents and disabled toilets being the most urgent.

- 8.1.6. Contact has been made with Charities Information Bureau who will assist the applicant to make funding applications to address other phases of the refurbishment.
- 8.1.7. The application requests that the area board contribute more than 50% of the total cost of this project, hence the minor financial adjustment in the officer recommendation.
- 8.1.8. Members may wish to incorporate a condition into this award recommending that the applicant seek support from Charities Information Bureau and Community First's Village Hall Officer in relation to their finances and ambitions for the hall.
- 8.1.9. A decision not to fund this application is unlikely to cause delay in proceeding with this project as the applicant would find the funding from their reserves; however this would diminish their modest reserves which could act as leverage for other phases of the work.

Ref	Applicant	Project proposal	Funding requested
8.2.	Glovers Court Amenity Group	Blackout blinds for the lounge	£178

- 8.2.1. Officers recommend that Glovers Court Amenity Group is awarded £178 towards the purchase of lounge blackout blinds, conditional on the balance of funding being in place.
- 8.2.2. Officers are of the opinion that this application meets the 2010/11 grant criteria. While Glovers Court is a residential facility in the town, the lounge, where the blinds are needed, is regularly used by other groups in the town.
- 8.2.3. The application demonstrates links to the Malmesbury & Villages Community Plan 2009-2013, in that it provides a comfortable meeting place for older and less able people and provides opportunities for them to participate in life-long learning and cultural opportunities.
- 8.2.4. The room where the blackout will be installed is regularly used to show illustrated talks and films, which is currently not possible during the day time and lighter evenings.
- 8.2.5. The amenity group are active fund-raisers, having raised over 75% of the costs of this project, which includes an increase in the contribution Westlea Housing Association originally offered.
- 8.2.6. A decision not to fully fund this application will delay the purchase of the blinds while further funding is sought.

Ref	Applicant	Project proposal	Funding requested
8.3.	Malmesbury River Valleys Trust	Educational materials.	£120

- 8.3.1. Officers recommend that Malmesbury River Valleys Trust is awarded £120 towards the cost of educational materials.
- 8.3.2. The initial application did not meet the 2010/11 grant criteria as it included a request for travel for school children, when this activity forms part of the school curriculum and takes place during the school day. An amendment has since been made requesting the educational materials only.
- 8.3.3. The application demonstrates links to the Malmesbury & Villages Community Plan 2009-2013, in that it reflects the values of both adults and young people who valued the rural nature of the area they lived in, as well as providing activities for young people.
- 8.3.4. The replica ceramic birds' eggs will be a useful resource for children during the River Valleys Trust school week (which this year is looking at birds and their eggs) and at a range of future events.
- 8.3.5. There is some concern that the applicant does hold a considerable level of financial reserves; however these are set aside for purchase of further land and maintenance of the current nature reserve.
- 8.3.6. A decision not to help fund this application is unlikely to delay the project as funding is likely to be taken from reserves.

<b>Appendices</b>	Appendix 1 Grant application – Minety Village Hall Appendix 2 Grant application – Glovers Court Amenity Group Appendix 3 Grant application – Malmesbury River Valleys Trust
-------------------	---

No unpublished documents have been relied upon in the preparation of this report.

<b>Report Author</b>	Miranda Gilmour, Community Area Manager Tel: 01672 515742 Mobile:07990 505882 E-mail: <a href="mailto:miranda.gilmour@wiltshire.gov.uk">miranda.gilmour@wiltshire.gov.uk</a>
----------------------	---

## **Public Consultations - 16 March 2011**

### **Library Service Review**

The Wiltshire Library Service Review has culminated in a decision by cabinet on 25 January to accept the proposals outlined in the Library Service review paper.

A summary of the proposals is available in the document provided tonight which has section for comments that can be completed and returned to the council.

The proposals include inviting members of the community to get involved in volunteering in their libraries and the document has a reply section for those interested to get in touch.

The key points for libraries in this area are:

- All mobile library stops will continue to operate
- Malmesbury library opening hours will be reduced from 38.5 to 33 hours a week
- Self service technology will be introduced to improve efficiency and help communities extend library opening hours through support from volunteers, who will be trained and supported by Wiltshire library staff.

### **Reducing Child Poverty Strategy Consultation**

The Child Poverty Act requires each local authority to produce a child poverty strategy.

The consultation is currently open regarding the content of the Wiltshire Reducing Child Poverty Strategy. The draft strategy includes a suggested strategic objective around geographic approaches (page 16).

The Area Board is invited to contribute its views. The link is set out below:

<http://www.wiltshire.gov.uk/healthandsocialcare/childrenyoungpeoplefamilies/reducingchildpovertyconsultation.htm>

Consultation closes on 4 April 2011.

Information has already been sent to a wide distribution including all councillors, the Wiltshire Assembly, thematic partnerships, schools and early years' settings.

This page is intentionally left blank

## MALMESBURY AREA BOARD

*Please note: all items are provisional and subject to change*

Date	Cabinet Member Attending	Location	Area Board Agenda Items (including officer contact details)
4 May 2011	Councillor Lionel Grundy	Sherston Village Hall	<b>Community items:</b> Filands Park update Participative budgeting event Library service – volunteering and feedback from the consultation <b>Partner items:</b> <b>Corporate items:</b> <b>Community Area Grants will be considered.</b>
29 June 2011	To be confirmed	Ashton Keynes Village Hall	<b>Community items:</b> Residents parking scheme <b>Partner items:</b> <b>Corporate items:</b> <b>Community Area Grants will be considered.</b>
7 September 2011	To be confirmed	Malmesbury School	<b>Community items:</b> <b>Partner items:</b> <b>Corporate items:</b> <b>Community Area Grants will be considered.</b>

Community area manager: Miranda Gilmour (miranda.gilmour@wiltshire.gov.uk)  
 Democratic services officer: Alexa Smith (alexa.smith@wiltshire.gov.uk)  
 Service director: Jacqui White (jacqui.white@wiltshire.gov.uk)

This page is intentionally left blank